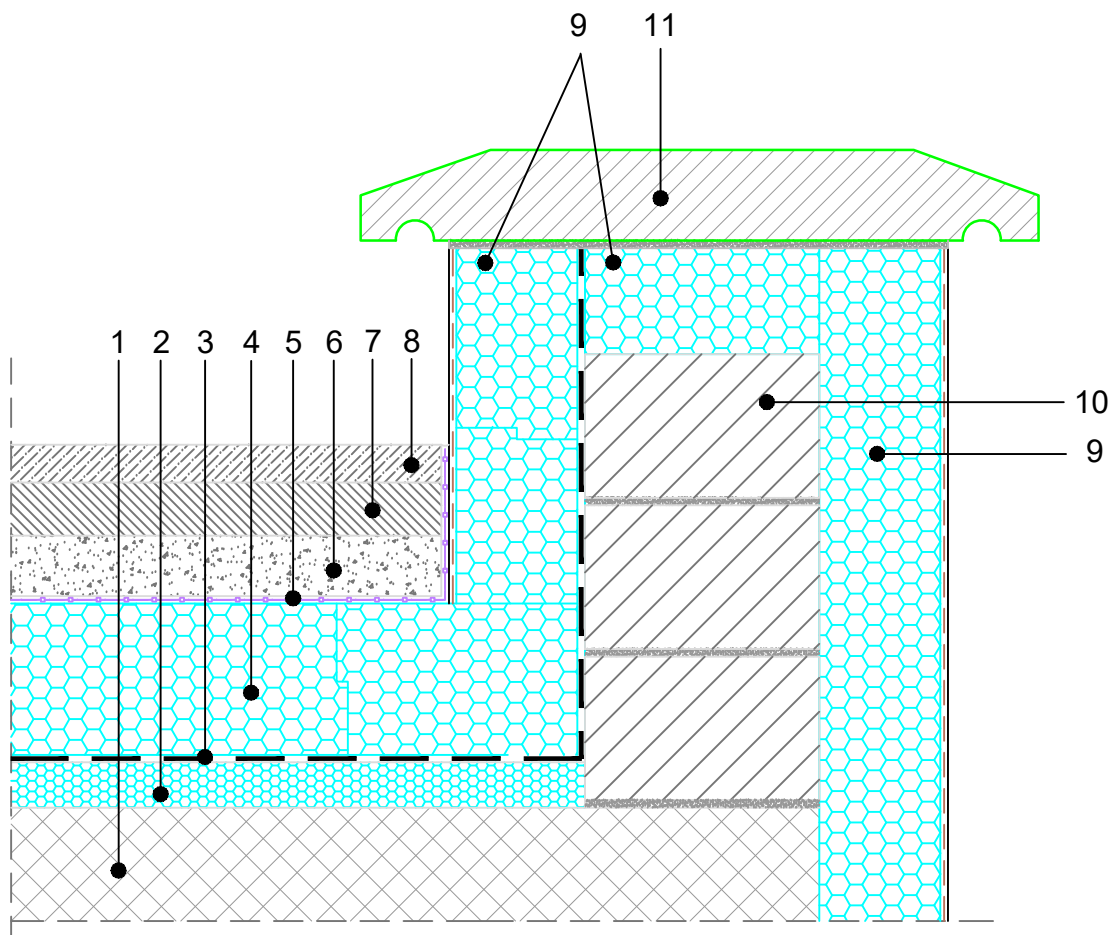


INVERTED FLAT ROOF  
 DRIVABLE ROOF  
 PARKING ASPHALT DECK  
 PARAPET WALL, SCALE 1:10

**10.09.2.06**



COMPOSITION of system solution (dimensions in detail to be calculated):

1. REINFORCED CONCRETE SLAB
2. FIBRAN *xps* INCLINE – tapered insulation
3. WATERPROOFING
4. FIBRAN *xps* 300-L
5. FIBRAN *filter* SF32 – drainage PP fleece
6. SAND UNDERLAY
7. BASE COURSE
8. WEARING COURSE
9. FIBRAN *xps* ETICS
10. PARAPET WALL
11. CONCRETE CAPPING STONE

NOTE:

- It is not allowed to work with an open flame in the close proximity of the XPS insulation.
- When choosing type of waterproofing, it is necessary to take into account that chlorides of PVC membrane have neg. affect on XPS.
- Inclination to be executed per project
- all dimensions to be calculated in accordance with static and building physics