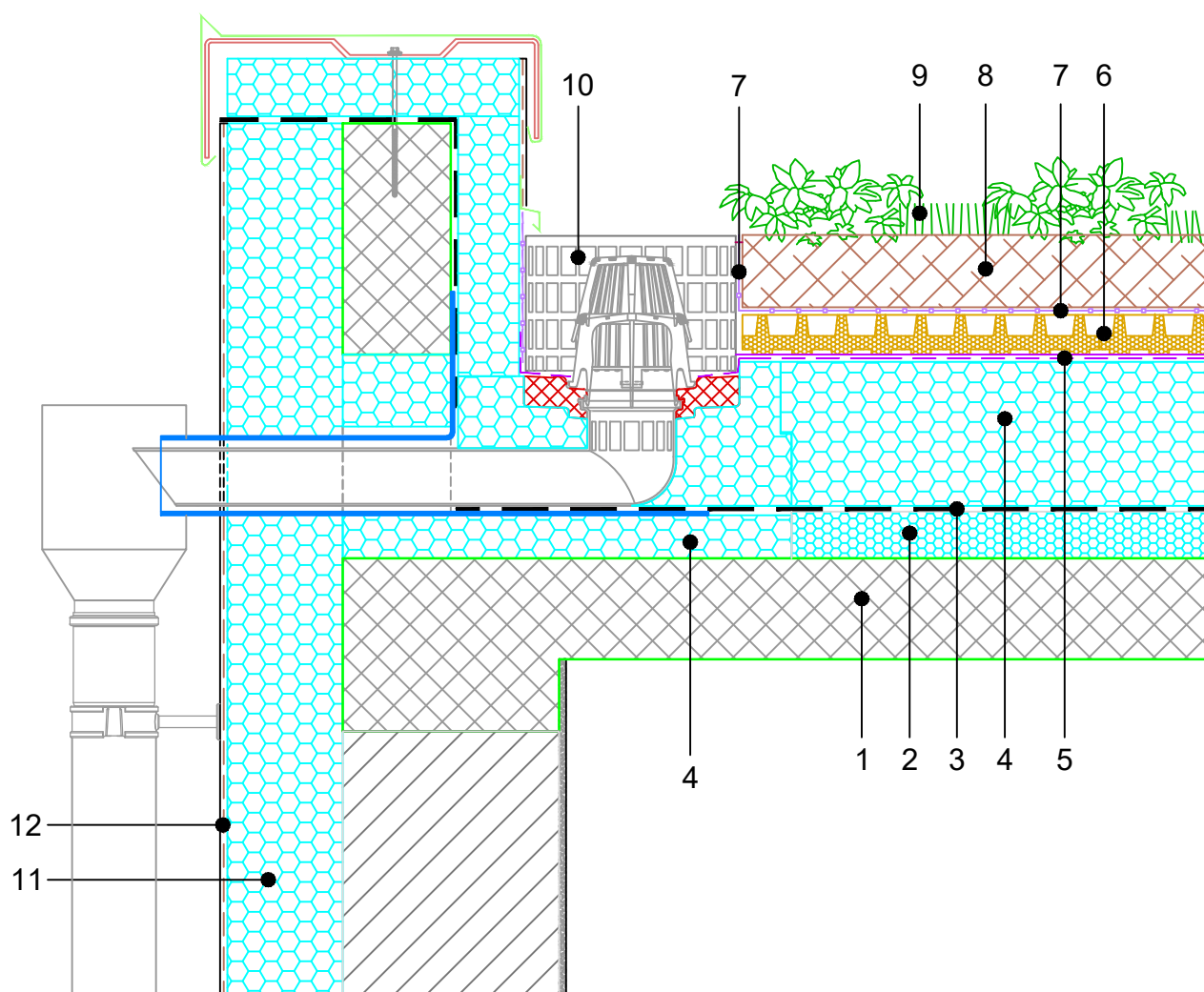


INVERTED FLAT ROOF
 OPTIMO skin SEAL GREEN ROOF
 EXTENSIVE GREENERY 1
 ANGULAR RAINWATER OUTLET No 1, SCALE 1:10

10.18.7.04



COMPOSITION of system solution (dimensions in detail to be calculated):

1. REINFORCED CONCRETE SLAB
2. TAPERED INSULATION FIBRAN*xps* INCLINE
3. WATERPROOFING
4. FIBRAN*xps* 300-L
5. FIBRAN*skin* SEAL
6. DRAINAGE-ACCUMULATION LAYER
7. FIBRAN*filter* SF32 – drainage PP fleece
8. GROWING MEDIUM cca 10 cm
9. VEGETATION: GRASSES, FLOWERS, SEDUM SPECIES
10. PERFORATED INSPECTION CHAMBER
11. FIBRAN*xps* ETICS GF
12. FACADE PLASTERS

NOTE:

- It is not allowed to work with an open flame in the close proximity of the XPS insulation.
- When choosing type of waterproofing, it is necessary to take into account that chlorides of PVC membrane have neg. affect on XPS.
- Membrane joints be carried out accordingly to the manufacturer's instructions
- Position 2. - to be executed per project